

## Feature Based Inspection

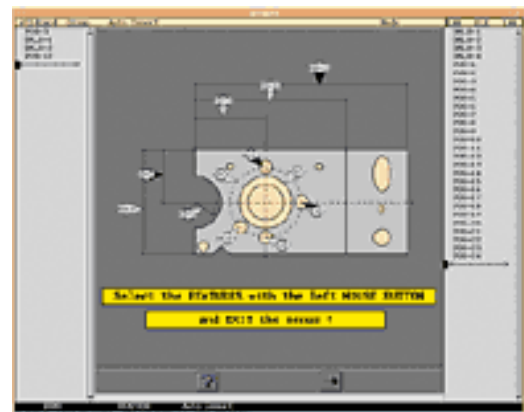
MTW-510-FEA-001

The QUINDOS option "**Feature Based Inspection**" allows the CMM operator to select features (diameters, true positions etc.) in any order out of a Master program, which contains all features, by simply clicking icons on the screen.

QUINDOS knows automatically what to measure, in which order, to arrive at the required result. Only the selected features are calculated and evaluated.

The shortest travel path for the coordinate measuring machine between the individual features is computed, ensuring maximum machine utilization and significant cost savings in a very short time.

This package is useful for the inspection of complex parts, such as cylinder heads or engine blocks. In particular if the same component has to be measured at different tooling steps.



### Advantages of Feature Based Inspection:

- Only one Master program needs to be maintained. From this CNC-run all sub programs will be automatically generated.
- Comparable measuring results, because the same nominal points and probing strategies are used (this is particularly important if results from purchaser and supplier must be compared). An essential requirement for ISO 9000!
- No long trainings, CMM operators are just introduced to the job
- Control of CNC-runs through SPC systems
- Significantly increased throughput of the CMM due reduced programming time

Existing QUINDOS programs can be transformed into feature based programs.